

JEFFERSON PLACE

CONDOMINIUM

PROPERTY INFORMATION

Total Number of Units: 48
Year Built: 2001
Acreage: 3.59
Amenities: Pool, Clubhouse, Fitness Center
Game Room
Number of Parking Spaces: 87
Number of Vehicles Allowed: 2 unassigned spaces
Condo Fee Includes: Water, Sewer, Snow Removal, Trash
Removal, Common Area Maintenance,
and Master Insurance Policy



DIRECTIONS

I-93 to Exit 8, Left off ramp onto Wellington Road, Right onto Eastern Avenue, Left to sales office at 80 Eastern Avenue.

WWW.BRADYSULLIVAN.COM

BRADY SULLIVAN

PROPERTIES

- PROUDLY PRESENTS -

JEFFERSON PLACE

CONDOMINIUM



Marketed by:

Patricia Simpson, Broker

BRADY SULLIVAN PROPERTIES, LLC

670 N. Commercial Street, Suite 303 Manchester, NH 03101

Telephone 603-622-6223

or visit us online at

WWW.BRADYSULLIVAN.COM

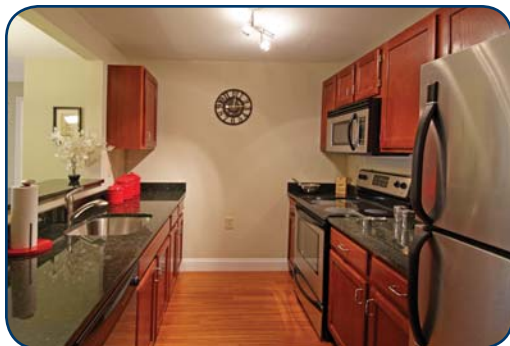


JEFFERSON PLACE

Beautiful 2 & 3 bedroom, 2 bath condos available in a quiet Manchester location with easy access to highways and downtown.



Brady Sullivan's Signature Upgrade Package, available in some condos, gives you the beautiful home you've always wanted at a price you can *really* afford!



AMENITIES

- Swimming Pool
- Fitness Center
- Clubhouse
- Private Balconies
- Gas Heat
- Central Air
- Nicely Landscaped
- On-site laundry (or some condos with washer/dryer combo!)
- Affordable
- Pet friendly

