

BEAVER POND ESTATES
 BRADY SULLIVAN BEAVER POND, LLC
 10000 BEAVER POND STATE ROAD
 LACONIA, NH 03249

UNIT ADDRESS CHART

UNIT NO. (SITE PLAN)	911 ADDRESS	UNIT NO. (SITE PLAN)	911 ADDRESS
UNIT 1	#30 BRECKENRIDGE WAY, UNIT 1	UNIT 34	#41 ARSON WAY, UNIT 34
UNIT 2	#31 BRECKENRIDGE WAY, UNIT 2	UNIT 35	#42 ARSON WAY, UNIT 35
UNIT 3	#32 BRECKENRIDGE WAY, UNIT 3	UNIT 36	#43 ARSON WAY, UNIT 36
UNIT 4	#33 BRECKENRIDGE WAY, UNIT 4	UNIT 37	#44 ARSON WAY, UNIT 37
UNIT 5	#34 BRECKENRIDGE WAY, UNIT 5	UNIT 38	#45 ARSON WAY, UNIT 38
UNIT 6	#35 BRECKENRIDGE WAY, UNIT 6	UNIT 39	#46 ARSON WAY, UNIT 39
UNIT 7	#36 BRECKENRIDGE WAY, UNIT 7	UNIT 40	#47 ARSON WAY, UNIT 40
UNIT 8	#37 BRECKENRIDGE WAY, UNIT 8	UNIT 41	#48 ARSON WAY, UNIT 41
UNIT 9	#38 BRECKENRIDGE WAY, UNIT 9	UNIT 42	#49 ARSON WAY, UNIT 42
UNIT 10	#39 BRECKENRIDGE WAY, UNIT 10	UNIT 43	#50 ARSON WAY, UNIT 43
UNIT 11	#40 BRECKENRIDGE WAY, UNIT 11	UNIT 44	#51 ARSON WAY, UNIT 44
UNIT 12	#41 BRECKENRIDGE WAY, UNIT 12	UNIT 45	#52 ARSON WAY, UNIT 45
UNIT 13	#42 BRECKENRIDGE WAY, UNIT 13	UNIT 46	#53 ARSON WAY, UNIT 46
UNIT 14	#43 BRECKENRIDGE WAY, UNIT 14	UNIT 47	#54 ARSON WAY, UNIT 47
UNIT 15	#44 BRECKENRIDGE WAY, UNIT 15	UNIT 48	#55 ARSON WAY, UNIT 48
UNIT 16	#45 BRECKENRIDGE WAY, UNIT 16	UNIT 49	#56 ARSON WAY, UNIT 49
UNIT 17	#46 BRECKENRIDGE WAY, UNIT 17	UNIT 50	#57 ARSON WAY, UNIT 50
UNIT 18	#47 BRECKENRIDGE WAY, UNIT 18	UNIT 51	#58 ARSON WAY, UNIT 51
UNIT 19	#48 BRECKENRIDGE WAY, UNIT 19	UNIT 52	#59 ARSON WAY, UNIT 52
UNIT 20	#49 BRECKENRIDGE WAY, UNIT 20	UNIT 53	#60 ARSON WAY, UNIT 53
UNIT 21	#50 BRECKENRIDGE WAY, UNIT 21	UNIT 54	#61 ARSON WAY, UNIT 54
UNIT 22	#51 BRECKENRIDGE WAY, UNIT 22	UNIT 55	#62 ARSON WAY, UNIT 55
UNIT 23	#52 BRECKENRIDGE WAY, UNIT 23	UNIT 56	#63 ARSON WAY, UNIT 56
UNIT 24	#53 BRECKENRIDGE WAY, UNIT 24	UNIT 57	#64 ARSON WAY, UNIT 57
UNIT 25	#54 BRECKENRIDGE WAY, UNIT 25	UNIT 58	#65 ARSON WAY, UNIT 58
UNIT 26	#55 BRECKENRIDGE WAY, UNIT 26	UNIT 59	#66 ARSON WAY, UNIT 59
UNIT 27	#56 BRECKENRIDGE WAY, UNIT 27	UNIT 60	#67 ARSON WAY, UNIT 60
UNIT 28	#57 BRECKENRIDGE WAY, UNIT 28	UNIT 61	#68 ARSON WAY, UNIT 61
UNIT 29	#58 BRECKENRIDGE WAY, UNIT 29	UNIT 62	#69 ARSON WAY, UNIT 62
UNIT 30	#59 BRECKENRIDGE WAY, UNIT 30	UNIT 63	#70 ARSON WAY, UNIT 63
UNIT 31	#60 BRECKENRIDGE WAY, UNIT 31	UNIT 64	#71 ARSON WAY, UNIT 64
UNIT 32	#61 BRECKENRIDGE WAY, UNIT 32	UNIT 65	#72 ARSON WAY, UNIT 65

SITE PLAN CERTIFICATION

I, JON ROKEH, HEREBY CERTIFY THAT THIS PLAN IS AN ACCURATE REPRESENTATION OF THE CONDOMINIUM SUBDIVISION AS SHOWN ON AUGUST 8, 2009 AND THAT IT COMPLIES WITH RSA 356-B:20, I, II, & V.
 I FURTHER CERTIFY THAT THE UNITS SHOWN HEREON ARE NOT YET BEGUN.

DATE: 11-2-10
 JON ROKEH, PE 11660

WETLAND DELINEATION CERTIFICATION:

PETER S. SCHAUER, CERTIFIED WETLAND SCIENTIST #48 OF SCHAUER ENGINEERS, WETLAND DELINEATION MANUAL (TECHNICAL REPORT Y-87-1, JANUARY 1987).

11/2/10
 PETER S. SCHAUER
 PETER SCHAUER

PLAN CERTIFICATIONS

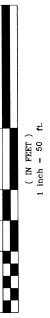
I HEREBY CERTIFY THAT THIS SURVEY AND SURVEY PLAT WAS PREPARED BY ME OR THOSE UNDER MY DIRECT SUPERVISION.
 THIS PLAN IS AN ACCURATE REPRESENTATION OF THE SURVEYED GROUND AND UNDER MY DIRECT SUPERVISION DURING 05/09/2006, AND THAT THE ADJUSTED HEREON CLOSURE IS NOT GREATER THAN 1/8" FOR EACH 100' OF THE SURVEYED GROUND.
 I HEREBY CERTIFY THAT I HAVE FILED A COPY OF THIS PLAN WITH THE PLANNING BOARD OF LACONIA, NH IN ACCORDANCE WITH RSA 376:18(IV).

WETLAND LOCATION CERTIFICATION

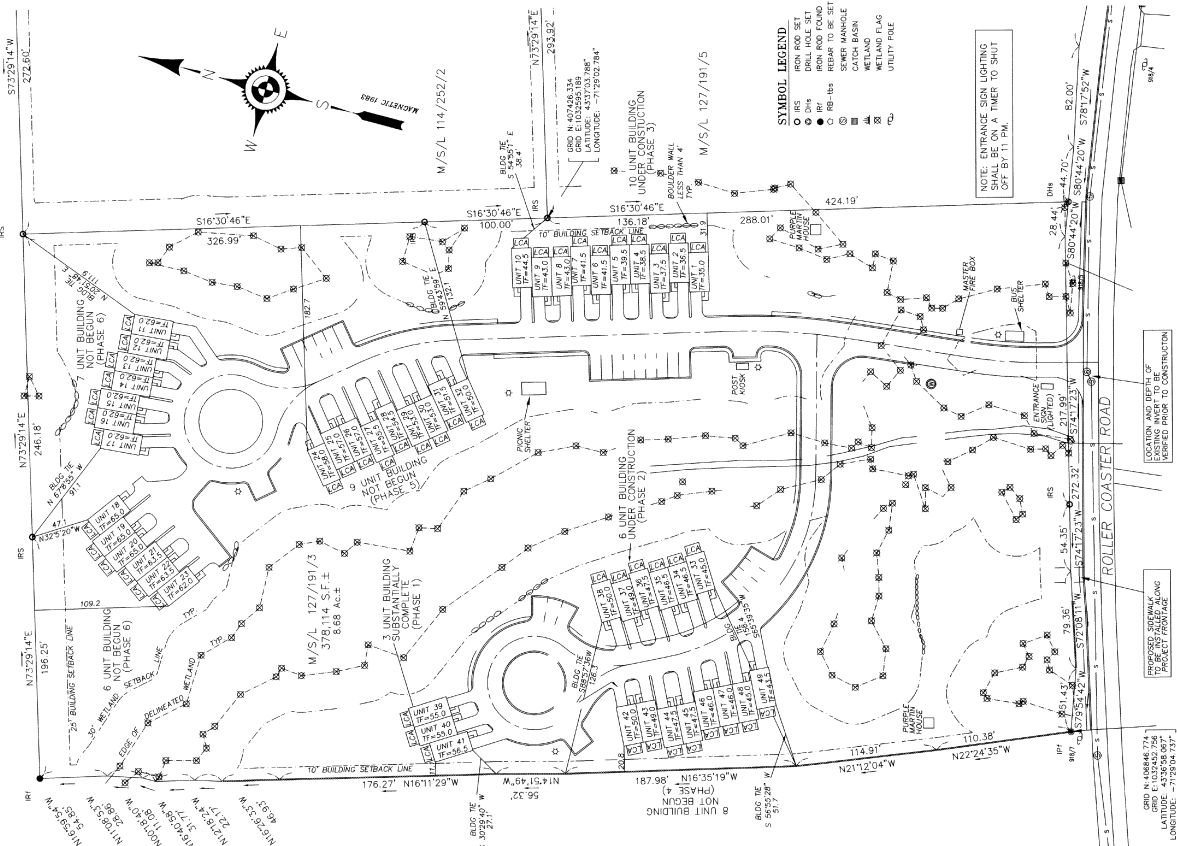
I HEREBY CERTIFY THAT THE WETLAND DELINEATION FLAGS DESCRIBED ABOVE WERE FIELD LOCATED BY STANDARD SURVEY METHODS (STATIONING, TOTAL STATION AND DATA COLLECTOR) AND THAT THE LOCATION OF THE FLAGS ARE ACCURATELY SHOWN ON THIS SURVEY PLAT.

11/3/2010
 Bryan L. Bailey, LLC #576
 BRYAN L. BAILEY, LLC #576

GRAPHIC SCALE



NOTE: THE INFORMATION SHOWN HEREON REPRESENTS A PORTION OF A 22 PAGE PLAN SET ON RECORD AT THE CITY OF LACONIA PLANNING OFFICE.

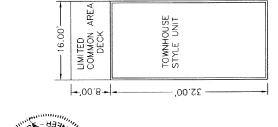


SYMBOL LEGEND:
 ○ IRON ROD SET
 ○ IRON ROD FOUND
 ○ REBAR TO BE SET
 ○ SUMP MANHOLE
 ○ WETLAND SIGN
 ○ UTILITY FILE

NOTE: ENTRANCE SIGN LISTINGS SHALL BE ON A TOWER TO SHUT OFF BY 11 PM.

LOCATION AND DEPTH OF IMPROVED SIDEWALKS TO BE VERIFIED PRIOR TO CONSTRUCTION.

GRID N 43°54' 24" W
 GRID E 110°54' 24" W
 LATITUDE 43°20' 40" N
 LONGITUDE -71°29' 14" W



TYPICAL UNIT PLAN

CONDOMINIUM SITE PLAN
 BEAVER POND ESTATES, A CONDOMINIUM
 TAX MAP 127, BLOCK 191, LOTS 3 AND 4
 ROLLER COASTER ROAD - LACONIA, NH
 BRADY SULLIVAN BEAVER POND, LLC
 DATE: 5-27-06

REVISIONS

DATE	DESCRIPTION	OWN BY	CK BY
7-7-06	REVISE PROJECT NAME/ADD CURVE DATA	JR	JR
8-22-06	ADD NOTES	JR	JR
8-22-06	EDIT FOR AG FILING	JR	JR
8-22-06	EDIT TO OWNER AND PHASING FOR AG FILING	JR	JR

DEVELOPER
 BRADY SULLIVAN BEAVER POND, LLC
 670 N. COMMERCIAL STREET, STE 303
 MANCHESTER, NH 03101

Rokeh Consulting, LLC
 89 KING ROAD, CHICHESTER, NH 03258
 PH: 603-387-8688 FAX: 603-513-6242

SCALE: 1" = 50'
 DR BY: JR CK BY: JR
 JOB NO. 20060002
 SHEET NO. 1 OF 1

